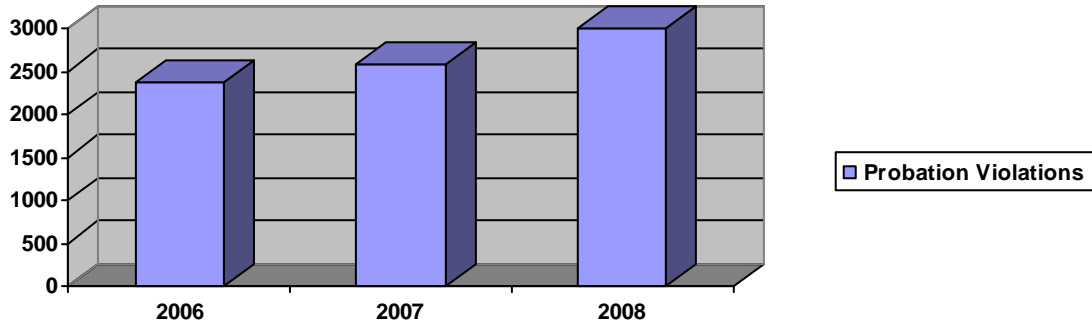


# Guilford County – 18<sup>th</sup> Judicial District 2008 Annual Report

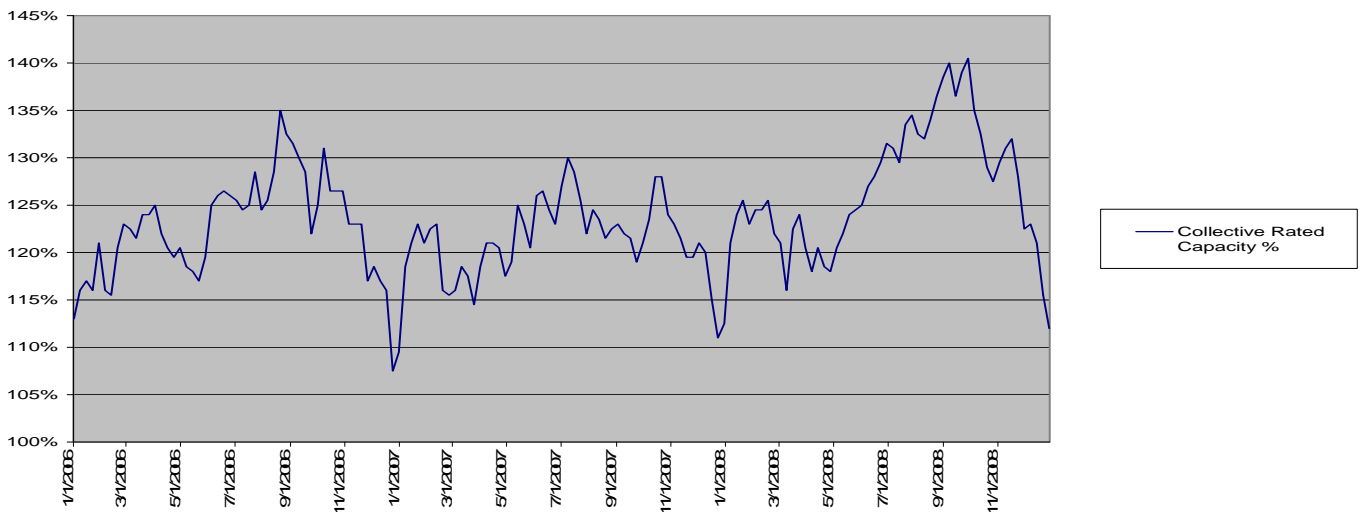
## *Workload*



- ◆ According to the Department of Corrections’ Research and Planning Division, the number of probation violations heard in Guilford’s courts rose by over 16% in 2008.
- ◆ Judges disposed of 107% of the total cases filed in 2008, despite losing six days of court time to courthouse construction in November. We continue to reduce the backlog of cases, particularly in criminal court. Superior Court has added 12 new criminal court sessions in 2009 to keep up with caseloads.
- ◆ Improvements continue in the Court’s efficient use of jurors. Fewer jurors were summonsed in 2008 without reducing juror availability for trials. At the end of June, Guilford County installed a new computerized jury summonsing and management system which will assist the Court in continuing to reduce costs and make efficient use of jurors’ time.

## *Citizens and the Community*

Greensboro and High Point Jails Rated Capacity %  
(January 2006-December 2008)



- ◆ The above chart tracks the jail population in Guilford County over the past three years. The population increased sharply throughout 2008 after remaining fairly consistent throughout 2007. Over these three years, the population never dropped below 108% of the jail’s rated capacity and reached a new high of 141% of rated capacity in September, 2008.

- ◆ In May, the voters of Guilford County approved bonds to fund construction of a new jail. A construction management team has been selected, although it will be several years before the jail will be opened.
- ◆ In November 2008 Guilford County finished the first phase of a major courthouse renovation project in Greensboro. Four new high-volume courtrooms opened on the Plaza level in addition to new offices for the Public Defender. The second phase of construction is anticipated to finish in April with new District Court Judges Chambers. Court and County officials are working to reduce citizen wait times in line to enter the building.
- ◆ The Guilford County Commissioners have sustained funding for Drug and Mental Health Courts, and for Pretrial Services Case Managers to help manage the jail population.

### *Guilford's Court Cases 2008\**

	<u>Pending Cases:</u> <u>January 08</u>	<u>Total Cases</u> <u>Filed</u>	<u>Total Cases</u> <u>Disposed</u>	<u>Pending Cases:</u> <u>December 08</u>	<u>Cases Disposed</u> <u>as a % of Filed</u> <u>2007</u>	<u>Cases Disposed</u> <u>as a % of Filed</u> <u>2008</u>	<u>Statewide</u> <u>Disposed as a %</u> <u>of Filed 2008</u>
<b>Superior Court Civil</b>							
Civil:	1,238	1,853	1,890	1,201	113%	102%	96%
Estates:	3,195	2,588	2,590	3,193	105%	100%	102%
Special Proceedings:	2,680	4,765	4,871	2,574	91%	102%	98%
Total:	7,113	9,206	9,351	6,968	99%	102%	99%
<b>Superior Court Criminal</b>							
Murder:	64	43	44	63	134%	102%	99%
Other Felonies:	6,790	8,989	10,901	4,878	109%	121%	113%
Misdemeanors:	502	854	957	399	104%	112%	105%
Misdemeanor Appeals:	195	118	163	150	115%	138%	109%
Total:	7,551	10,004	12,065	5,490	109%	121%	111%
<b>District Court Civil</b>							
Civil Magistrates:	1,936	23,254	23,431	1,759	100%	101%	101%
Domestic Relations:	4,434	7,031	6,769	4,696	104%	96%	103%
Civil:	3,101	5,748	5,685	3,164	88%	99%	100%
Total:	9,471	36,033	35,885	9,619	99%	100%	101%
<b>District Court Criminal</b>							
Felonies:	3,677	13,151	11,607	5,221	104%	88%	100%
Non-Motor Vehicle:	22,954	33,839	38,752	18,041	112%	115%	113%
Motor Vehicle:	27,939	49,339	55,389	21,889	111%	112%	110%
Total:	54,570	96,329	105,748	45,151	111%	110%	110%
<b>Infractions</b>	11,709	38,960	41,048	9,621	107%	105%	108%
<b>Total All Cases</b>	<b>90,414</b>	<b>190,532</b>	<b>204,097</b>	<b>76,849</b>	<b>107%</b>	<b>107%</b>	<b>108%</b>

- ◆ Guilford County compares favorably with other counties, either meeting or exceeding the statewide benchmark in many categories. The Court also continues to make headway in reducing case backlogs, disposing of almost 14,000 more cases than were filed in 2008.

\*All case filing and disposition data are from the AOC Court Performance Management System (CPMS).

### *State of the Courts*

- ◆ North Carolina ranks first in the nation in the number of incoming criminal cases per 100,000 population, yet ranks 50<sup>th</sup> in the percentage of total justice system funding spent on courts.\*\*
- ◆ Based on FTE (Full-Time Equivalent) positions, Guilford County accounts for 4.94% of the Judicial Branch's Budget and accounts for 5.78% of the state's total case filings.

\*\*NCSC, Examining the Work of State Courts (2006); Bureau of Justice Statistics, Criminal Justice Expenditure and Employment Extracts Program (2006)